

# The Oakridge

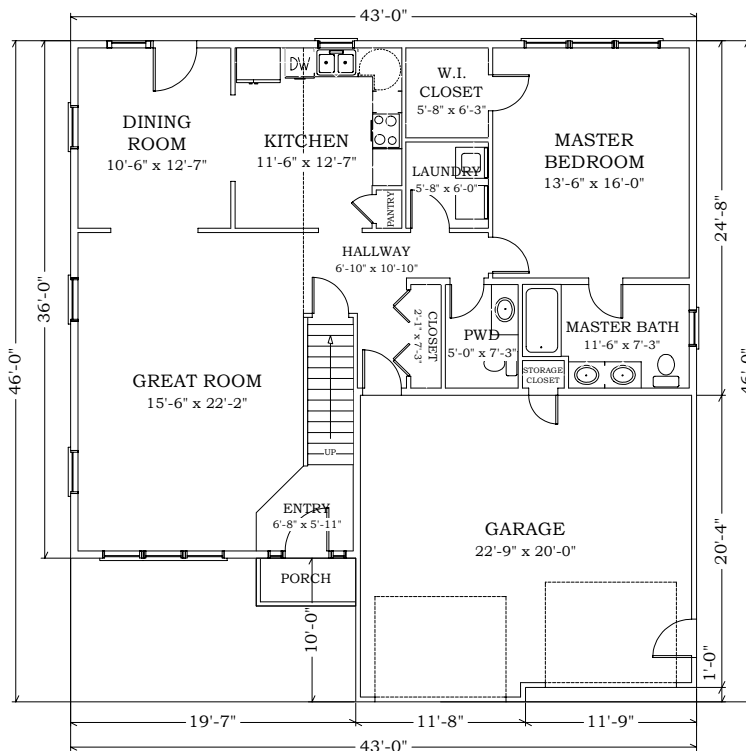


Living Area- 1,949 sq. ft.

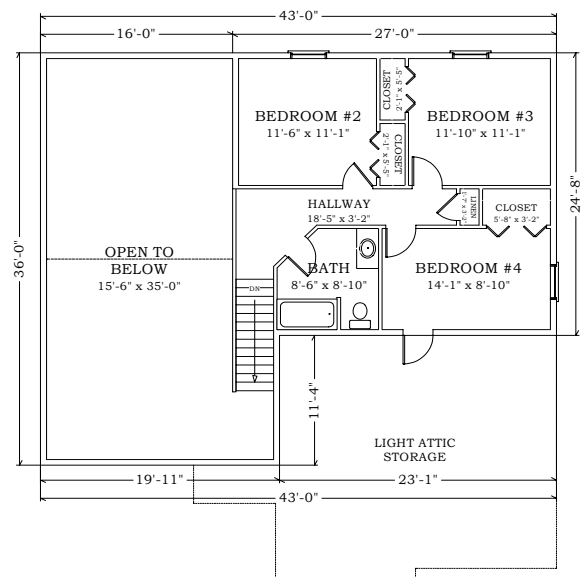
Garage - 481 sq. ft.

Open to Below - 610 sq. ft.

## FIRST FLOOR



## SECOND FLOOR



*Where Vision meets Expertise.*

[www.trivalleycontractors.com](http://www.trivalleycontractors.com)

Home of *E*design Pricing & Customization Tool

1501 E. Cumberland St. Suite B Lebanon, PA 17042  
 [P] 717.277.7674 [F] 717.277.7670