

# The Kingston

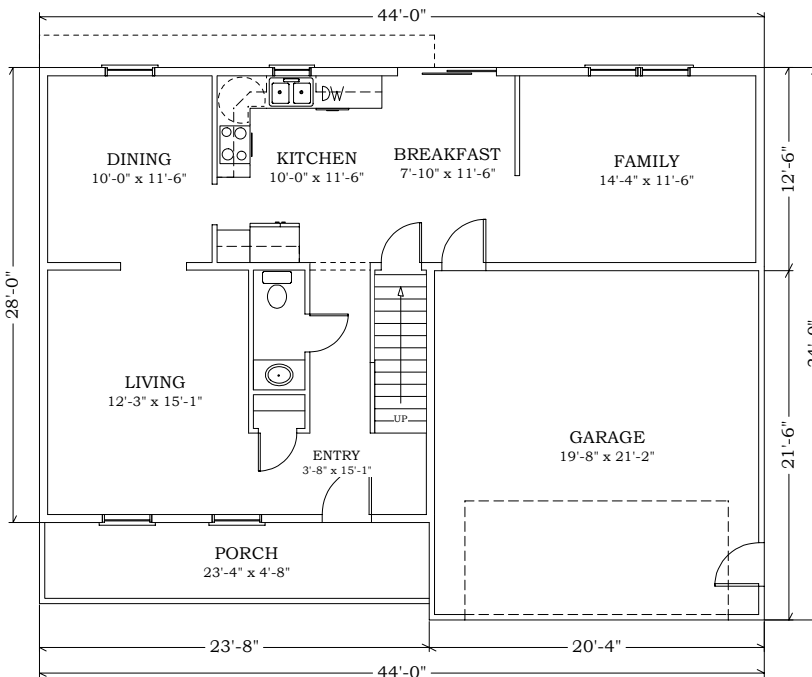


Living Area - 2,006 sq. ft.

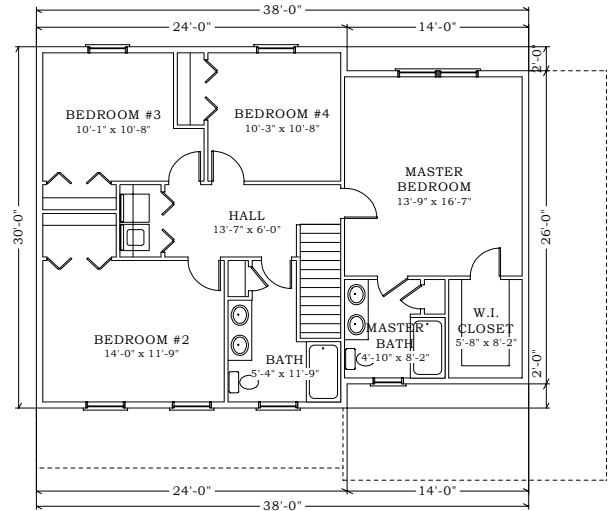
Open to Below - 34 sq. ft.

Garage - 430 sq. ft.

## FIRST FLOOR



## SECOND FLOOR



[www.trivalleycontractors.com](http://www.trivalleycontractors.com)

Home of *E*design Pricing & Customization Tool

1501 E. Cumberland St. Suite B Lebanon, PA 17042

[P] 717.277.7674 [F] 717.277.7670

This sheet is for illustrative purposes only and is not part of a legal contract. Plans are subject to modification as necessary to meet building codes, and to facilitate mechanical installation. The architectural design, drawings, and contents of this firm are the sole property of Tri-Valley Contractors Inc. and is protected under copyright law. Reproduction in any form without express written consent is strictly prohibited. © 2007 Tri-Valley Contractors